



Spare Parts Catalogue

iGen4500 Digital Inverter Generator



westinghouseoutdoorpower.com.au

Powering People Since 1886.

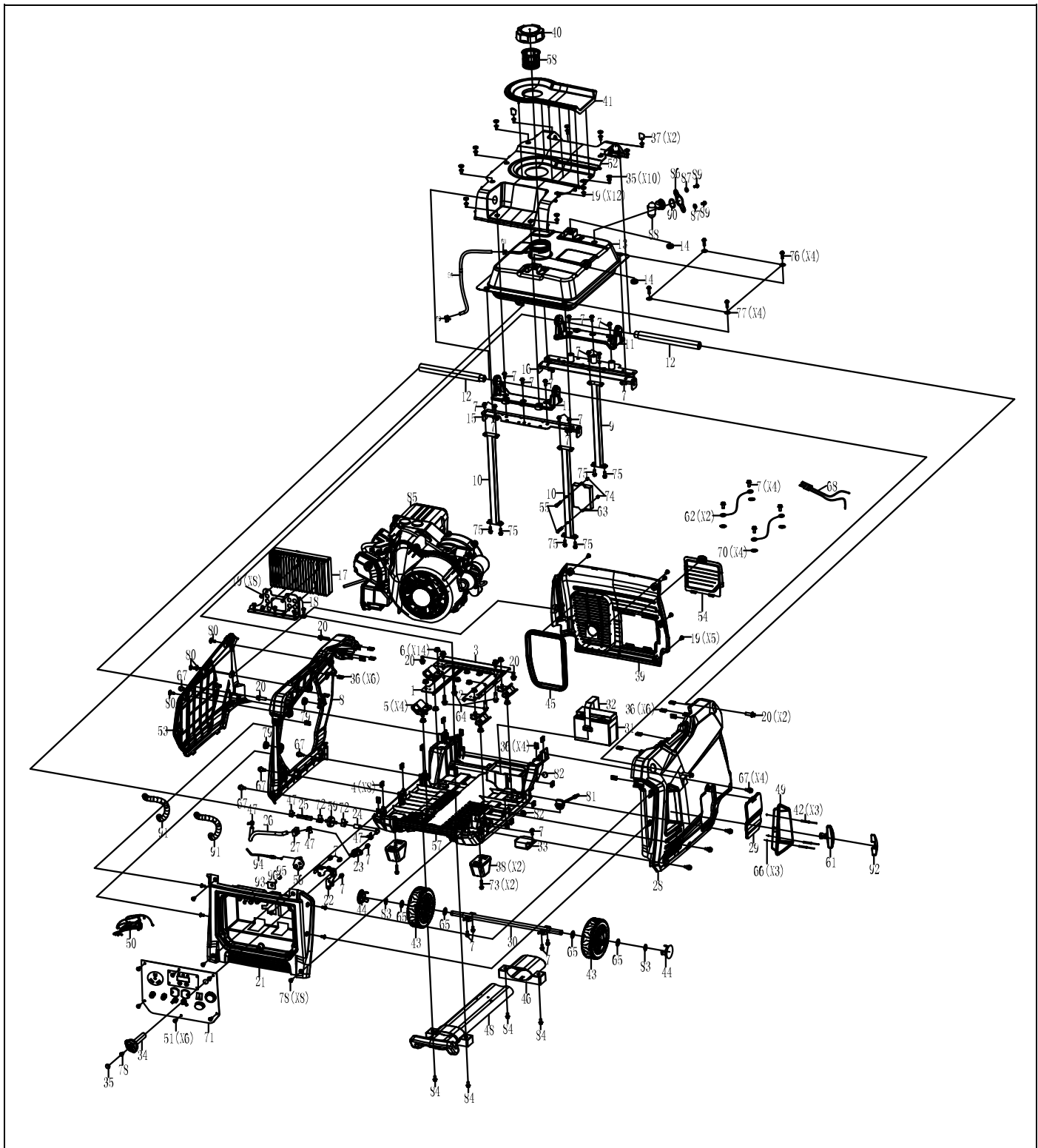
Spare Parts

| | | | |
|----------------------|---------------------|----------------------|--------------------------------|
| Model: | iGen4500 | Parts List Revision: | 2018-07-01 |
| First Serial Number: | 04500A0518938000001 | Sub-Assembly: | Ancillaries |
| Last Serial Number: | | Illustration: | 420400011480005 R00 2018-04-19 |

| Item | Description | Qty per Machine | Part Number |
|------|--|-----------------|---------------|
| 1 | Bracket | 1 | DJ 503001 |
| 2 | Bracket | 1 | DJ 503002 |
| 3 | Bracket | 1 | DJ 503003 |
| 4 | Square Nut M6 | 8 | DJ 90027 |
| 5 | Vibration Isolator | 4 | DJ 503004 |
| 6 | Nut M8 | 14 | DJ 90044 |
| 7 | Bolt M6X12 | 28 | DJ 91325 |
| 8 | Enclosure, Side | 1 | DJ 503005-048 |
| 9 | Post | 1 | DJ 503006 |
| 10 | Post | 2 | DJ 503007 |
| 11 | Bracket | 2 | DJ 503008 |
| 12 | Handle | 2 | DJ 503009 |
| 13 | Fuel Tank | 1 | DJ 503084 |
| 14 | Fuel Tank Vibration Isolator B | 2 | DJ 500008 |
| 15 | Bracket | 1 | DJ 503011 |
| 16 | Bracket | 1 | DJ 503042 |
| 17 | Inverter Module | 1 | DJ 503110 |
| 18 | Bracket | 1 | DJ 503013 |
| 19 | Cross Recessed Pan Head bolt M6X12 | 27 | DJ 92043 |
| 20 | Bolt M8X20 | 4 | DJ 91345 |
| 21 | Seat, Control Panel | 1 | DJ 503016 |
| 22 | Bracket | 1 | DJ 503017 |
| 23 | Fuel Switch | 1 | DJ 503062 |
| 24 | Fuel Hose $\phi 4 \times \phi 10 \times \phi 6 \times \phi 12-95L$ | 1 | DJ 503018 |
| 25 | Fuel Hose $\phi 4 \times \phi 10 \times \phi 6 \times \phi 12-55L$ | 1 | DJ 503019 |
| 26 | Fuel Hose $\phi 4 \times \phi 10-194L$ | 1 | DJ 503020 |
| 27 | Pin | 1 | DJ 503044 |
| 28 | Enclosure, Side | 1 | DJ 503142-048 |
| 29 | Inspection Cover | 1 | DJ 503022-048 |
| 30 | Axle Shaft | 1 | DJ 503023 |
| 31 | Battery | 1 | DJ 511007 |
| 32 | Battery Clamp | 1 | DJ 599606 |
| 33 | Dc Voltage Regulator | 1 | DJ 503048 |
| 34 | Fuel Switch Knob | 1 | DJ 503024 |
| 35 | Plug | 11 | DJ 500068 |
| 36 | J Clip | 16 | DJ 500060 |
| 37 | Cap, Centrifugal Cover | 2 | DJ 503025 |
| 38 | Vibration Isolator | 2 | DJ 503026 |
| 39 | Muffler Baffle | 1 | DJ 503027 |

| Item | Description | Qty per Machine | Part Number |
|------|--|-----------------|---------------|
| 40 | Fuel Cap | 1 | DJ 503059 |
| 41 | Fuel Splash Guard | 1 | DJ 503029 |
| 42 | Core Pulling Rivets | 3 | DJ 503067 |
| 43 | Wheel | 2 | DJ 503031 |
| 44 | Axle Cover | 2 | DJ 503032 |
| 45 | Muffler Rubber Seal | 1 | DJ 500108 |
| 46 | Handle Bracket | 1 | DJ 503033 |
| 47 | Clip, Fuel Hose | 4 | DJ 503034 |
| 48 | Handle Assembly | 1 | DJ 503035 |
| 49 | Handle Plate | 1 | DJ 503036-052 |
| 50 | Wiring Harness | 1 | DJ 503260 |
| 51 | Cross Recessed Pan Head Screw + Gasket Combination M5X12 | 6 | DJ 91825 |
| 52 | Enclosure, Top | 1 | DJ 503038-048 |
| 53 | Side Panel | 1 | DJ 503141-048 |
| 54 | Access Cover | 1 | DJ 503040 |
| 55 | Bolt M6X30 | 2 | DJ 91334 |
| 56 | Vent Pipe | 1 | DJ 95921 |
| 57 | Engine Bottom Board | 1 | DJ 503045 |
| 58 | Fuel Strainer | 1 | DJ 518801 |
| 59 | Fuel Outlet Strainer | 1 | DJ 516401 |
| 60 | Clip, Fuel Hose | 2 | DJ 94405 |
| 61 | Starter Handle | 1 | DJ 500018 |
| 62 | Grounding Wire | 2 | DJ 500044 |
| 63 | Controller | 1 | DJ 503047 |
| 64 | Bolt M8X30 | 4 | DJ 91347 |
| 65 | Washer | 4 | DJ 94023 |
| 66 | Flat Washer | 3 | DJ 94249 |
| 67 | Hex Flange Bolt M6X20 | 8 | DJ 92097 |
| 68 | Battery Lead | 1 | DJ 503165 |
| 69 | Clip, Fuel Hose Φ 9.5 | 2 | DJ 94409 |
| 70 | Tooth Type Gasket Φ 6 | 4 | DJ 94003 |
| 71 | Control Panel Assembly | 1 | DJ 503145 |
| 71.1 | AC Socket | 2 | DJ 6478 |
| 71.2 | USB Socket | 1 | DJ 9056 |
| 71.3 | 12V DC Socket | 1 | DJ 6042 |
| 71.4 | Reset Button | 1 | DJ 9021 |
| 71.5 | Efficiency Mode Switch | 1 | DJ 9061 |
| 71.6 | Start/Stop Switch | 1 | DJ 6022 |
| 71.7 | Indicator Light Set | 1 | DJ 97537 |
| 71.8 | Data Centre | 1 | DJ 9031 |
| 72 | Clip, Fuel Hose | 2 | DJ 94402 |
| 73 | Bolt M6X25 | 2 | DJ 91331 |
| 74 | Nut M6 | 2 | DJ 90010 |
| 75 | Bolt M6X20 | 6 | DJ 91330 |
| 76 | Bolt M6X20 | 4 | DJ 91397 |

| Item | Description | Qty per Machine | Part Number |
|------|------------------------------------|-----------------|--------------------|
| 77 | Gasket, Rotor Bolt | 4 | DJ 96801 |
| 78 | Cross Recessed Pan Head bolt M6X16 | 20 | DJ 92078 |
| 79 | Fuel Tank Vibration Isolator A | 2 | DJ 500007 |
| 80 | Bolt M6X16 | 4 | DJ 92079 |
| 81 | Base Oil Cover | 1 | DJ 503052 |
| 82 | Stop | 2 | DJ 503053 |
| 83 | Bush | 2 | DJ 500321 |
| 84 | Bolt M6X40 | 4 | DJ 91337 |
| 85 | Engine Assembly | 1 | DJ D4000iR-CR-101E |
| 86 | Clamp | 1 | DJ 500244 |
| 87 | Bolt M5X10 | 2 | DJ 91426 |
| 88 | Fuel Level Sensor | 1 | DJ 500247 |
| 89 | Gasket | 1 | DJ 500252 |
| 90 | Gasket | 2 | DJ 500324 |
| 91 | Conduit | 1 | DJ 503082 |
| 92 | Cover, Starter Handle | 1 | DJ 500017-231 |
| 93 | Fuel Switch Bracket | 1 | DJ 500011 |
| 94 | Cable | 1 | DJ 500333 |
| 95 | Spring | 1 | DJ 500012 |
| 96 | Steel Ball | 1 | DJ 500003 |



Drawing No: 420400011480005

Date: 2018-04-19

Rev: 00

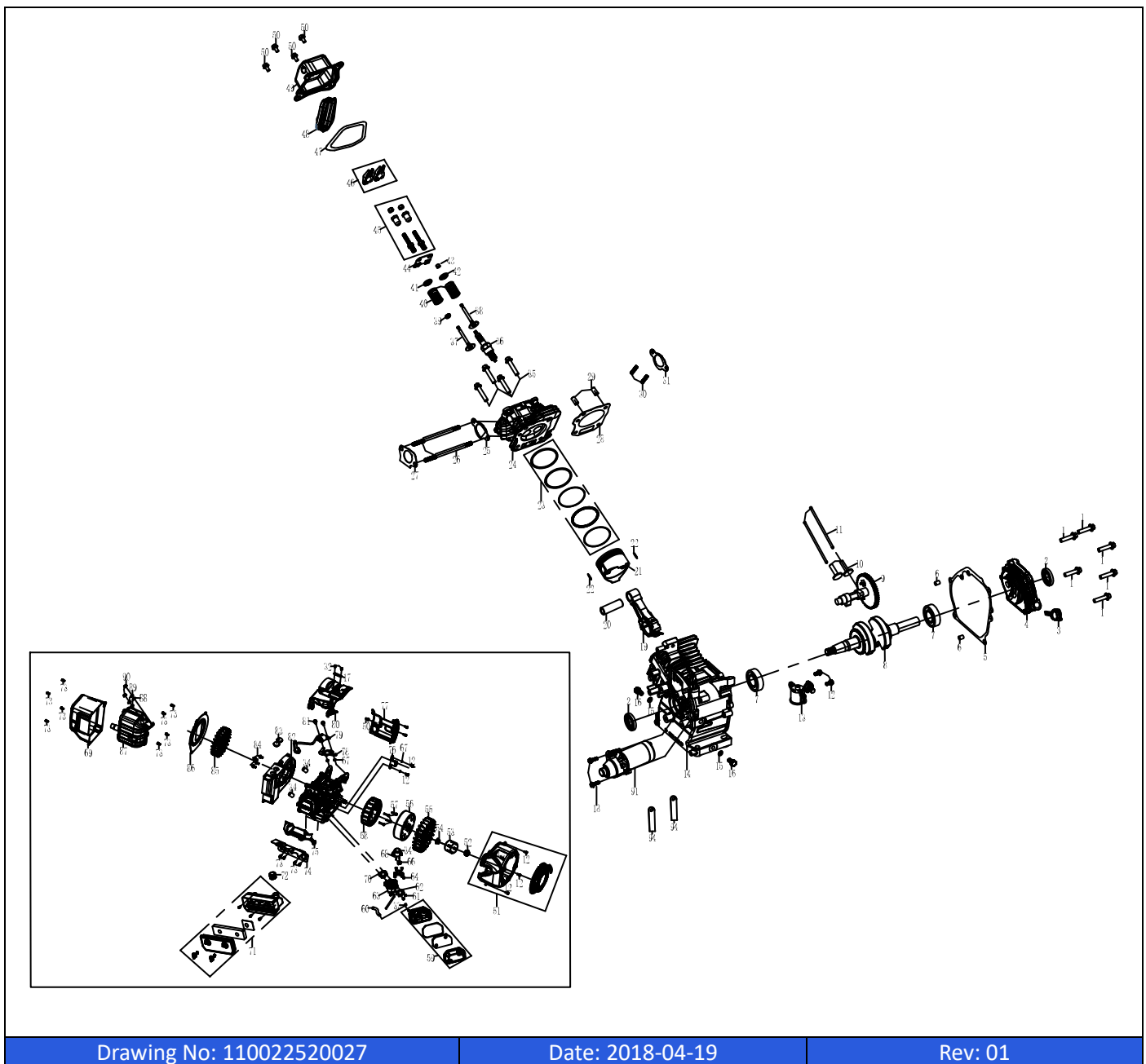
Spare Parts

| | | | |
|----------------------|---------------------|----------------------|-----------------------------|
| Model: | iGen4500 | Parts List Revision: | 2018-07-01 |
| First Serial Number: | 04500A0518938000001 | Sub-Assembly: | Powertrain |
| Last Serial Number: | | Illustration: | 110022520027 R01 2018-04-19 |

| Item | Description | Qty per Machine | Part Number |
|------|----------------------------|-----------------|-------------|
| 1 | Bolt M8X30 | 6 | DJ 91347 |
| 2 | Oil Seal | 2 | DJ 93507 |
| 3 | Dipstick | 1 | DJ 245604 |
| 4 | Cover Assembly, Crankcase | 1 | DJ 240116 |
| 5 | Gasket, Crankcase | 1 | DJ 96041 |
| 6 | Pin | 2 | DJ 240901 |
| 7 | Bearing | 2 | DJ 93010 |
| 8 | Crankshaft | 1 | DJ 240364 |
| 9 | Camshaft Assembly | 1 | DJ 332003 |
| 10 | Lifter, Valve | 2 | DJ 246103 |
| 11 | Rod, Push | 2 | DJ 241901 |
| 12 | Bolt M6X16 | 8 | DJ 91329 |
| 13 | Switch Assembly, Oil Level | 1 | DJ 245106 |
| 14 | Crankcase | 1 | DJ 330202 |
| 15 | Washer, Drain Plug | 2 | DJ 94007 |
| 16 | Bolt, Drain Plug | 2 | DJ 91816 |
| 17 | Cable Clamp | 1 | DJ 249914 |
| 18 | Bolt M6X25 | 2 | DJ 91331 |
| 19 | Rod Assembly., Connecting | 1 | DJ 241507 |
| 20 | Pin, Piston | 1 | DJ 245503 |
| 21 | Piston | 1 | DJ 241211 |
| 22 | Clip, Piston | 2 | DJ 241301 |
| 23 | Scraper Ring Set ,Piston | 1 | DJ 241607 |
| 24 | Cylinder Head | 1 | DJ 241021 |
| 25 | Gasket, Intake | 1 | DJ 96182 |
| 26 | Stud Bolt | 2 | DJ 91035 |
| 27 | Gasket, Carburettor | 1 | DJ 96051 |
| 28 | Gasket, Cylinder Head | 1 | DJ 96058 |
| 29 | Pin | 2 | DJ 240905 |
| 30 | Stud Bolt | 2 | DJ 91007 |
| 31 | Gasket, Exhaust | 1 | DJ 96055 |
| 32 | Bolt M8X12 | 2 | DJ 91342 |
| 33 | Plug | 1 | DJ 249919 |
| 34 | Cover | 1 | DJ 249916 |
| 35 | Bolt M8X60 | 4 | DJ 91359 |
| 36 | Spark Plug | 1 | DJ 97109 |
| 37 | Valve, In | 1 | DJ 241704 |
| 38 | Valve Exhaust | 1 | DJ 245904 |
| 39 | Retainer, Spring | 1 | DJ 241806 |

| Item | Description | Qty per Machine | Part Number |
|------|-----------------------------|-----------------|-------------|
| 40 | Spring, Valve | 2 | DJ 246001 |
| 41 | Seat, Valve Spring, In | 1 | DJ 241801 |
| 42 | Seat, Valve Spring, Ex | 1 | DJ 241802 |
| 43 | Rotator | 1 | DJ 241804 |
| 44 | Plate, Push Rod Guide | 1 | DJ 242202 |
| 45 | Adjuster Rocker Arm | 2 | DJ 91818 |
| 46 | Rocker Arm | 2 | DJ 242101 |
| 47 | Gasket, Headcover | 1 | DJ 96200 |
| 48 | Cover Comp, Cylinder Head | 1 | DJ 241115 |
| 49 | Cover Comp, Cylinder Head | 1 | DJ 241116 |
| 50 | Bolt M6X12 | 7 | DJ 91325 |
| 51 | Starter Assembly | 1 | DJ 330501 |
| 52 | Bolt | 1 | DJ 91864 |
| 53 | Cup, Flywheel | 1 | DJ 334501 |
| 54 | Nut M14 | 1 | DJ 90003 |
| 55 | Fan, Flywheel | 1 | DJ 334601 |
| 56 | Rotor | 1 | DJ 500191 |
| 57 | Bolt M6X60 | 4 | DJ 91400 |
| 58 | Stator | 1 | DJ 500291 |
| 59 | Air Box | 1 | DJ 337001 |
| 60 | Tube, Breather | 1 | DJ 95602 |
| 61 | Nut M6 | 4 | DJ 90016 |
| 62 | Gasket | 1 | DJ 94226 |
| 63 | Carburettor Assembly | 1 | DJ 332808 |
| 64 | Stepper Motor Bracket | 1 | DJ 249915 |
| 65 | Screw M4X25 | 3 | DJ 92055 |
| 66 | Stepper Motor | 1 | DJ 249949 |
| 67 | Spring washers $\phi 4$ | 4 | DJ 94020 |
| 68 | Screw M4X6 | 4 | DJ 92056 |
| 69 | Shield, Muffler | 1 | DJ 500057 |
| 70 | Spacer | 1 | DJ 332301 |
| 71 | Air Cleaner Assembly | 1 | DJ 332901 |
| 72 | Tube, Fuel Tank To Carbon | 1 | DJ 95918 |
| 73 | Bolt M6X20 | 12 | DJ 91330 |
| 74 | Bracket, Air Cleaner | 1 | DJ 249917 |
| 75 | Shroud, Upper | 1 | DJ 240511 |
| 76 | The Trigger | 1 | DJ 339902 |
| 77 | Shroud, Right | 1 | DJ 330503 |
| 78 | Ignition Coil Support Plate | 1 | DJ 339903 |
| 79 | Ignition Coil | 1 | DJ 249946 |
| 80 | Shroud, Above | 1 | DJ 330502 |
| 81 | Bolt M6X28 | 2 | DJ 91333 |
| 82 | Fan Casing | 1 | DJ 244306 |
| 83 | Cap, Centrifugal Cover | 2 | DJ 244304 |

| Item | Description | Qty per Machine | Part Number |
|------|------------------|-----------------|-------------|
| 84 | Bolt M8X20 | 4 | DJ 91345 |
| 85 | Fan | 1 | DJ 244606 |
| 86 | Fan Cover | 1 | DJ 334302 |
| 87 | Muffler Assembly | 1 | DJ 243740 |
| 88 | Flat Washer | 2 | DJ 94216 |
| 89 | Spring Washer | 2 | DJ 94206 |
| 90 | Nut M8 | 2 | DJ 90011 |
| 91 | Starting Motor | 1 | DJ 97431 |



Drawing No: 110022520027

Date: 2018-04-19

Rev: 01

