



## Spare Parts Catalogue

### iGen2500 Digital Inverter Generator



[westinghouseoutdoorpower.com.au](http://westinghouseoutdoorpower.com.au)

Powering People Since 1886.

## Spare Parts

|                      |                     |                      |                                |
|----------------------|---------------------|----------------------|--------------------------------|
| Model:               | iGen2500            | Parts List Revision: | 2018-07-01                     |
| First Serial Number: | 02500A0518938000149 | Sub-Assembly:        | Ancillaries                    |
| Last Serial Number:  |                     | Illustration:        | 420275011480007 R01 2018-04-19 |

| Item | Description                           | Qty per Machine | Part Number     |
|------|---------------------------------------|-----------------|-----------------|
| 1    | Muffler Baffle                        | 1               | DJ 500384       |
| 2    | Shield, Muffler 1                     | 1               | DJ 202501       |
| 3    | Cross Recessed Pan Head bolt St4.2X13 | 10              | DJ 92014        |
| 4    | Bolt M6X30                            | 5               | DJ 91334        |
| 5    | Motor Fan Cowl                        | 1               | DJ 500127       |
| 6    | Nut M12                               | 1               | DJ 90014        |
| 7    | Stator                                | 1               | DJ 500397       |
| 8    | Bolt M6X12                            | 15              | DJ 91325        |
| 9    | Rotor                                 | 1               | DJ 500129       |
| 10   | Motor Fan                             | 1               | DJ 500037       |
| 11   | J Clip                                | 10              | DJ 500045       |
| 12   | Engine Assembly                       | 1               | DJ 110009830020 |
| 13   | Cross Recessed Pan Head bolt M4X16    | 1               | DJ 92032        |
| 14   | Fuel Tank Vibration Isolator C        | 2               | DJ 500009       |
| 15   | Inverter Bracket                      | 1               | DJ 500020       |
| 16   | Inlet Cover                           | 1               | DJ 500038       |
| 17   | Fuel Switch Bracket                   | 1               | DJ 500011       |
| 18   | Inverter Module                       | 1               | DJ 500399       |
| 19   | Starter Handle                        | 1               | DJ 500018       |
| 20   | Back Panel                            | 1               | DJ 500128       |
| 21   | Control Panel Assembly                | 1               | DJ 714919       |
| 21.1 | USB Socket                            | 1               | DJ 34204-069    |
| 21.2 | Hour Meter                            | 1               | DJ 9057         |
| 21.3 | Efficiency Mode Switch                | 1               | DJ 9061         |
| 21.4 | AC Socket                             | 1               | DJ 6478         |
| 22   | Fuel Switch Knob                      | 1               | DJ 500016       |
| 23   | Stop Bolt M5X18                       | 2               | DJ 92012        |
| 24   | Side Panel                            | 1               | DJ 500310-048   |
| 25   | Enclosure, Side                       | 1               | DJ 500028-048   |
| 26   | Hex Flange Bolt M6X20                 | 6               | DJ 92003        |
| 27   | Fuel Tank Vibration Isolator B        | 3               | DJ 500008       |
| 28   | Circlip                               | 1               | DJ 500027       |
| 29   | Inspection Cover                      | 1               | DJ 500031-048   |
| 30   | Fuel Tank Vibration Isolator A        | 4               | DJ 500007       |
| 31   | Bolt M6X20                            | 4               | DJ 91330        |
| 32   | Rubber Foot                           | 4               | DJ 500034       |
| 33   | Square Nut M6                         | 6               | DJ 90027        |
| 34   | Floor                                 | 1               | DJ 500002       |
| 35   | Vibration Isolator                    | 4               | DJ 500317       |

| Item | Description  | Qty per Machine | Part Number   |
|------|--|-----------------|---------------|
| 36   | Motor Vibration Isolator   | 1               | DJ 500040     |
| 37   | Engine Vibration Isolator  | 1               | DJ 500035     |
| 38   | Fuel Tank  | 1               | DJ 700201     |
| 39   | Fuel Splash Guard  | 1               | DJ 500032     |
| 40   | Fuel Strainer  | 1               | DJ 500010     |
| 41   | Fuel Cap   | 1               | DJ 500304     |
| 42   | Flat Washer  | 8               | DJ 99519      |
| 43   | Enclosure, Side  | 1               | DJ 500029-048 |
| 44   | Side Panel   | 1               | DJ 500311-048 |
| 45   | Rope Guide Plate   | 1               | DJ 500315     |
| 46   | Nut M6   | 4               | DJ 90016      |
| 47   | Handle Plate   | 1               | DJ 500298     |
| 48   | Cover, Starter Handle  | 1               | DJ 500017-231 |
| 49   | Fuel Switch  | 1               | DJ 503062     |
| 50   | Pull Tray  | 1               | DJ 500015     |
| 51   | Spring   | 1               | DJ 500012     |
| 52   | Steel Ball   | 1               | DJ 500003     |
| 53   | Pin  | 2               | DJ 240904     |
| 54   | Cross Recessed Pan Head Screw + Gasket Combination M5X35                           | 2               | DJ 92013      |
| 55   | Grounding Wire   | 1               | DJ 500044     |
| 56   | Earth Wire   | 1               | DJ 500026     |
| 57   | Fuel Hose  | 1               | DJ 95541      |
| 58   | Clip, Fuel Hose $\Phi 11 \times 0.8$   | 3               | DJ 94411      |
| 59   | Fuel Hose  | 1               | DJ 95542      |
| 60   | Clip, Fuel Hose $\Phi 9 \times 0.8$  | 1               | DJ 94410      |
| 61   | Fuel Outlet Strainer   | 1               | DJ 516401     |
| 62   | Clip, Fuel Hose $\Phi 10$  | 2               | DJ 94413      |
| 63   | Fuel Hose $\Phi 4 \times \Phi 10 \times \Phi 5 \times \Phi 11 \times 200\text{mm}$ | 1               | DJ 95470      |
| 64   | Muffler Rubber Seal  | 1               | DJ 202601     |
| 65   | Cover  | 1               | DJ 500039     |
| 66   | Wiring Harness   | 1               | DJ 500303     |
| 67   | Cross Recessed Pan Head Screw + Gasket Combination M5X12                           | 15              | DJ 91825      |
| 68   | Open Type Oval Head Blind Rivets $\Phi 3 \times 15$                                | 2               | DJ 92001      |
| 69   | Tooth Type Gasket $\Phi 6$   | 4               | DJ 94003      |
| 70   | Split Lock Washer $\Phi 5$   | 4               | DJ 94204      |
| 71   | Flat Washer $\Phi 5$   | 2               | DJ 94219      |
| 72   | Starter Rope   | 1               | DJ 500014     |
| 73   | Flat Washer $\Phi 3.2$   | 2               | DJ 94217      |
| 74   | DC Voltage Regulator   | 1               | DJ 500138     |
| 75   | Circlip  | 1               | DJ 94006      |
| 76   | Circlip  | 1               | DJ 94018      |



Drawing No: 420275011480007

Date: 2018-04-19

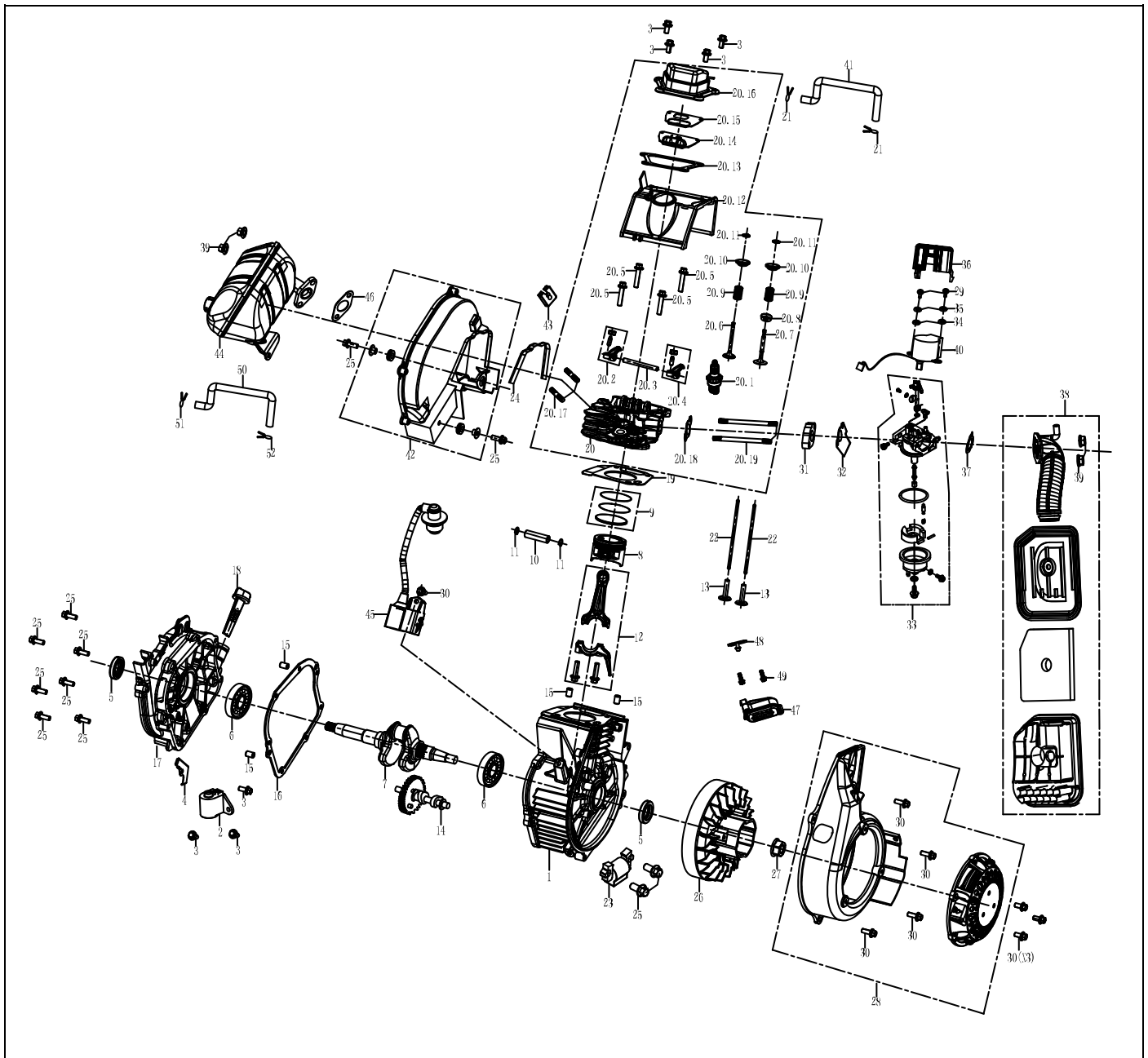
Rev: 01

## Spare Parts

|                      |                     |                      |                             |
|----------------------|---------------------|----------------------|-----------------------------|
| Model:               | iGen2500            | Parts List Revision: | 2018-07-01                  |
| First Serial Number: | 02500A0518938000149 | Sub-Assembly:        | Powertrain                  |
| Last Serial Number:  |                     | Illustration:        | 110009830020 R01 2018-02-02 |

| Item  | Description                   | Qty per Machine | Part Number |
|-------|-------------------------------|-----------------|-------------|
| 1     | Crankcase                     | 1               | DJ 200203   |
| 2     | Switch Assembly, Oil Level    | 1               | DJ 205101   |
| 3     | Bolt M6X12                    | 7               | DJ 91325    |
| 4     | Cable Clamp                   | 1               | DJ 209903   |
| 5     | Oil Seal                      | 2               | DJ 93501    |
| 6     | Bearing                       | 2               | DJ 93008    |
| 7     | Crankshaft                    | 1               | DJ 200304   |
| 8     | Piston                        | 1               | DJ 211203   |
| 9     | Scraper Ring Set, Piston      | 1               | DJ 211603   |
| 10    | Pin, Piston                   | 1               | DJ 205501   |
| 11    | Clip, Piston                  | 2               | DJ 201301   |
| 12    | Rod Assembly, Connecting      | 1               | DJ 201502   |
| 13    | Lifter, Valve                 | 2               | DJ 206101   |
| 14    | Camshaft Assembly             | 1               | DJ 202002   |
| 15    | Pin                           | 4               | DJ 240904   |
| 16    | Gasket, Crankcase             | 1               | DJ 96004    |
| 17    | Cover Assembly, Crankcase     | 1               | DJ 200101   |
| 18    | Dipstick                      | 1               | DJ 205601   |
| 19    | Gasket, Cylinder Head         | 1               | DJ 96814    |
| 20    | Cylinder Head                 | 1               | DJ 201003   |
| 20.1  | Spark Plug                    | 1               | DJ 97101    |
| 20.2  | Exhaust Valve Rocker Assembly | 1               | DJ 202102   |
| 20.3  | Rockshaft                     | 1               | DJ 202103   |
| 20.4  | Inlet Valve Rocker Assembly   | 1               | DJ 202101   |
| 20.5  | Bolt M6X50                    | 4               | DJ 91339    |
| 20.6  | Valve Exhaust                 | 1               | DJ 205901   |
| 20.7  | Valve, In                     | 1               | DJ 201702   |
| 20.8  | Inlet Valve Spring Seat       | 1               | DJ 201802   |
| 20.9  | Spring, Valve                 | 2               | DJ 206001   |
| 20.10 | Seat, Valve Spring, In        | 2               | DJ 201801   |
| 20.11 | Valve Lock Clamp              | 2               | DJ 200801   |
| 20.12 | Shroud                        | 1               | DJ 200501   |
| 20.13 | Gasket, Headcover             | 1               | DJ 96006    |
| 20.14 | Cylinder Head Breathing Board | 1               | DJ 201103   |
| 20.15 | Gasket                        | 1               | DJ 201104   |
| 20.16 | Cover Comp, Cylinder Head     | 1               | DJ 201101   |
| 20.17 | Stud Bolt                     | 2               | DJ 91002    |
| 20.18 | Gasket, Connection Block      | 1               | DJ 96007    |
| 20.19 | Stud Bolt                     | 2               | DJ 91023    |

| Item | Description                       | Qty per Machine | Part Number    |
|------|-----------------------------------|-----------------|----------------|
| 21   | Clip, Breather Tube $\Phi$ 10.5   | 2               | DJ 94407       |
| 22   | Rod, Push                         | 2               | DJ 201902      |
| 23   | Magneto Ignition                  | 1               | DJ 97502       |
| 24   | Stripper Rubber                   | 1               | DJ 209901      |
| 25   | Bolt M6X20                        | 11              | DJ 91330       |
| 26   | Fan, Flywheel                     | 1               | DJ 200401      |
| 27   | Nut M12                           | 1               | DJ 90014       |
| 28   | Starter Assembly                  | 1               | DJ 204902      |
| 29   | Cross Recessed Pan Head Bolt M3X8 | 2               | DJ 91805       |
| 30   | Bolt M6X16                        | 8               | DJ 91329       |
| 31   | Thermal Insulation, Carburettor   | 1               | DJ 202301      |
| 32   | Paper Washer, Carburettor         | 1               | DJ 96121       |
| 33   | Carburettor Assembly              | 1               | DJ 202805      |
| 34   | Flat Washer $\Phi$ 3.2            | 2               | DJ 94217       |
| 35   | Spring Washer $\Phi$ 3.2          | 2               | DJ 94203       |
| 36   | Stepper Motor Protective Cover    | 1               | DJ 209906      |
| 37   | Gasket, Air Cleaner               | 1               | DJ 96009       |
| 38   | Air Cleaner Assembly              | 1               | DJ 202901      |
| 38.1 | Air Cleaner Element               | 1               | DJ 160503/5138 |
| 39   | Nut M6                            | 4               | DJ 90016       |
| 40   | Stepper Motor                     | 1               | DJ 752007      |
| 41   | Tube, Breather                    | 1               | DJ 95614       |
| 42   | Muffler Cover 2                   | 1               | DJ 202502      |
| 43   | Clip, Muffler Cover               | 1               | DJ 209902      |
| 44   | Muffler Assembly                  | 1               | DJ 203705      |
| 45   | Ignition Coil                     | 1               | DJ 97610       |
| 46   | Gasket, Exhaust                   | 1               | DJ 96008       |



Drawing No: 11009830020

Date: 2018-02-02

Rev: 01

