



Spare Parts Catalogue

iGen1250 Digital Inverter Generator



westinghouseoutdoorpower.com.au

Powering People Since 1886.

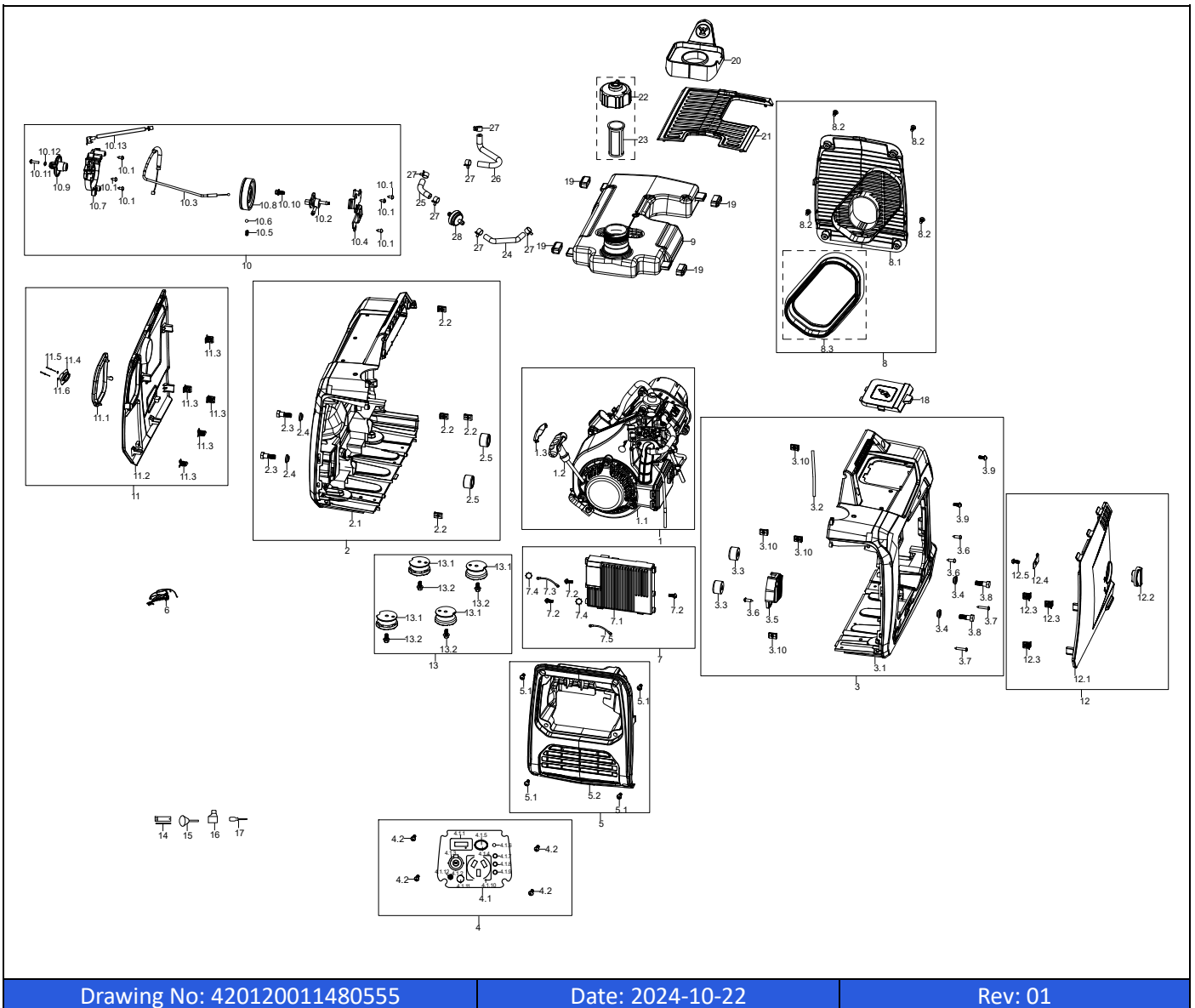
Spare Parts

Model:	iGen1250	Parts List Revision:	2024-10-22
First Serial Number:	12B1124B1-88	Sub-Assembly:	Ancillaries
Last Serial Number:		Illustration:	420120011480555 R01

Item	Description	Qty per Machine	Part Number
1	Engine Kit Assembly	1	DJ 100240049
1.1	Engine DH56	1	DJ 111000560620VN
1.2	Starter Handle	1	DJ 500018
1.3	Cover, Starter Handle	1	DJ 500017-231
2	Left Frame Kit Assembly	1	DJ 100280038
2.1	Left Frame	1	DJ 504695-221
2.2	J Clip	4	DJ 500045
2.3	Bolt M8X25	2	DJ 92351
2.4	Power Vibration Damping Gasket	2	DJ 504711
2.5	Power Vibration Damping Gasket	2	DJ 504712
3	Right Frame Kit Assembly	1	DJ 100280115
3.1	Right Frame	1	DJ 504696-221
3.2	Sealing Strip	1	DJ 504887
3.3	Power Vibration Damping Gasket	2	DJ 504712
3.4	Power Vibration Damping Gasket	2	DJ 504711
3.5	DC Voltage Regulator	1	DJ 500043
3.6	Screw St4.2X16Mm	3	DJ 92195
3.7	Screw St4.0X25	2	DJ 92102
3.8	Bolt M8X25	2	DJ 92351
3.9	Cross Recessed Pan Head Screw + Gasket Combination M5X12	2	DJ 91825
3.10	J Clip	4	DJ 500045
4	Panel Kit Assembly	1	DJ 100110073
4.1	Panel Assembly	1	DJ 505108
4.1.1	Data Center	1	DJ 9416
4.1.2	Cigarette Lighter	1	DJ 6402
4.1.3	Cover, 12V DC Socket	1	DJ 500051
4.1.4	Efficiency Mode Switch	1	DJ 9061
4.1.5	Cover, Efficiency Mode Switch	1	DJ 9080
4.1.6	Switch	1	DJ 9423
4.1.7	Running Lights	1	DJ 9067
4.1.8	Fault Warning Light	1	DJ 9066
4.1.9	Oil Warning Light	1	DJ 9066
4.1.10	AC Socket	1	DJ 6478
4.1.11	Reset Button	1	DJ 9021
4.1.12	Grounding Bolt	1	DJ 9074
4.2	Cross Recessed Pan Head Screw + Gasket Combination M5X12	4	DJ 91825

Item	Description	Qty per Machine	Part Number
5	Panel Rear Cover Kit Assembly	1	DJ 100140014
5.1	Cross Recessed Pan Head Screw + Gasket Combination M5X12	4	DJ 91825
5.2	Panel Rear Cover	1	DJ 504700
6	Deputy Wiring Harness	1	DJ 505441
7	Inverter Kit Assembly	1	DJ 100100040
7.1	Inverter Module	1	DJ 505008
7.2	Screw M5X8	3	DJ 92044
7.3	Grounding Wire	1	DJ 504721
7.4	Tooth Type Gasket Φ 6	2	DJ 94003
7.5	Grounding Wire	1	DJ 504821
8	Muffler Panel Kit Assembly	1	DJ 100030013
8.1	Muffler Panel	1	DJ 504701
8.2	Cross Recessed Pan Head Screw + Gasket Combination M5X12	4	DJ 91825
8.3	Sealing Ring	1	DJ 504705
9	Fuel Tank	1	DJ 505134
10	Fuel Switch Kit Assembly	1	DJ 100360039
10.1	Cross Recessed Pan Head Bolt ST4.2X13	6	DJ 92014
10.2	Fuel Switch	1	DJ 504410
10.3	Cable	1	DJ 504718
10.4	Fuel Switch Bracket	1	DJ 504411
10.5	Spring	1	DJ 500012
10.6	Steel Ball	1	DJ 500003
10.7	Fixing Plate	1	DJ 504328
10.8	Cable Tray	1	DJ 504329
10.9	Fuel Switch Knob	1	DJ 504562-231
10.10	Bolt M6X12	1	DJ 91325
10.11	Cross Recessed Pan Head bolt M4X16	1	DJ 92032
10.12	Flat Washer M4	1	DJ 94325
10.13	Engine Switch	1	DJ 505442
11	Left Panel Kit Assembly	1	DJ 100150058
11.1	Pull Cord Decorative Plate	1	DJ 504706
11.2	Left Panel	1	DJ 504697-221B
11.3	Clip	5	DJ 504237
11.4	Rope Guide Plate	1	DJ 500019-052
11.5	Bolt M3x15mm	2	DJ 500661
11.6	Flat Washer Φ 3.2	2	DJ 94217
12	Right Panel Kit Assembly	1	DJ 100150059
12.1	Right Panel	1	DJ 504698-221A
12.2	Knob	1	DJ 504549
12.3	Clip	3	DJ 504237
12.4	Limit Block	1	DJ 504550

Item	Description	Qty per Machine	Part Number
12.5	Cross Recessed Pan Head Screw + Gasket Combination M5X12	1	DJ 91825
13	Vibration Damping Cushion Assembly	1	DJ 100190005
13.1	Frame Isolation Pad	4	DJ 504745
13.2	Bolt M6X12	4	DJ 91325
14	Spark Plug Sleeve	1	DJ 99126
15	Oil Funnel	1	DJ 500942
16	Oil Bottle Assembly	1	DJ 99549
17	Double-Ended Screwdriver	1	DJ 99506
18	Observation Cover	1	DJ 504699-126
19	Fuel Tank Vibration Isolator C	4	DJ 500009
20	Fuel Slot	1	DJ 504703
21	Rubber Pad	1	DJ 504702
22	Fuel Cap	1	DJ 504738-231
23	Fuel Strainer	1	DJ 500171
24	Fuel Line	1	DJ 95797
25	Fuel Line	1	DJ 95798
26	Fuel Line	1	DJ 95799
27	Fuel Line Clamp	6	DJ 94490
28	Fuel Outlet Strainer	1	DJ 516401



Drawing No: 420120011480555

Date: 2024-10-22

Rev: 01

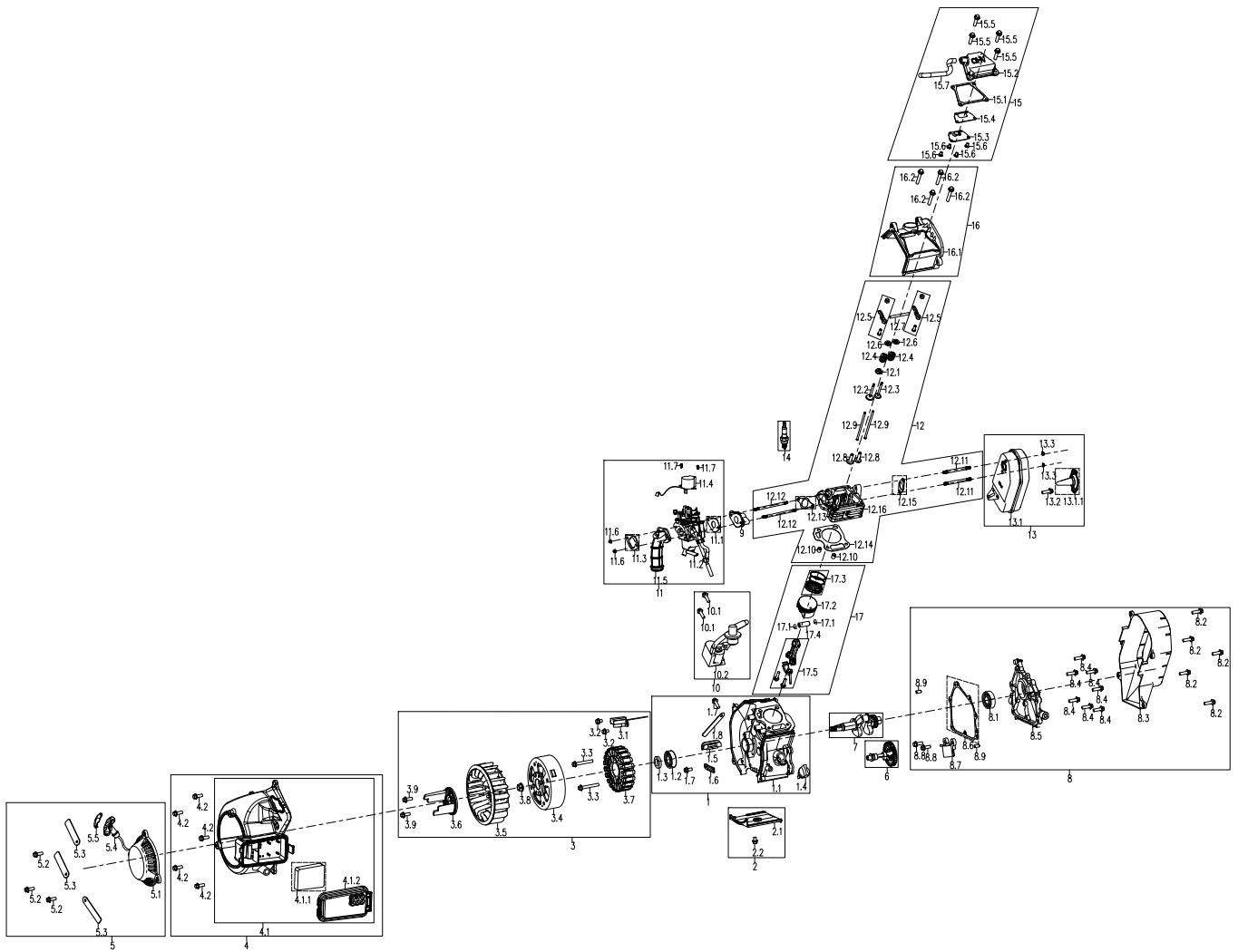
Spare Parts

Model:	iGen1250	Parts List Revision:	2024-10-22
First Serial Number:	12B1124B1-88	Sub-Assembly:	Powertrain
Last Serial Number:		Illustration:	111000560620VN R01

Item	Description	Qty per Machine	Part Number
1	Crankcase Kit Assembly	1	DJ 50120071
1.1	Crankcase	1	DJ 346001
1.2	Bearing	1	DJ 93005
1.3	Oil Seal	1	DJ 93531
1.4	Dipstick Assembly	1	DJ 245601-138
1.5	Rubber Sleeve	1	DJ 346031
1.6	Crimping Block	1	DJ 346044
1.7	Bolt M6X12	2	DJ 91325
1.8	Clip, Harness	1	DJ 599601
2	Wind-Lead-Cover Kit Assembly	1	DJ 50130035
2.1	Upper Wind-Lead-Cover	1	DJ 346032
2.2	Bolt M6X12	1	DJ 91325
3	Impeller Kit Assembly	1	DJ 50170026
3.1	Trigger	1	DJ 346014
3.2	Bolt M6X12	2	DJ 91325
3.3	Bolt M6X30	2	DJ 91309
3.4	Rotor	1	DJ 346020
3.5	Impeller	1	DJ 346021
3.6	Starter Pulley	1	DJ 346022
3.7	Stator	1	DJ 346045
3.8	Nut M10	1	DJ 90013
3.9	Bolt M6X16	2	DJ 91329
4	Blower Housing Kit Assembly	1	DJ 50590021
4.1	Blower Housing	1	DJ 346023
4.1.1	Air Filter	1	DJ 2178
4.1.2	Air Filter Cover	1	DJ 2179
4.2	Bolt M6X16	5	DJ 91329
5	Start Puller Kit Assembly	1	DJ 50580019
5.1	Start Puller Assembly	1	DJ 346024
5.2	Bolt M6X16	3	DJ 91329
5.3	Clip, Harness	3	DJ 599601
5.4	Starter Handle	1	DJ 500018
5.5	Cover, Starter Handle	1	DJ 500017-231
6	Camshaft Assembly	1	DJ 346008
7	Crankshaft	1	DJ 346002
8	Crankcase Cover Kit Assembly	1	DJ 50200098

Item	Description	Qty per Machine	Part Number
8.1	Bearing	1	DJ 93005
8.2	Bolt M6X16	5	DJ 91329
8.3	Air Duct Panel	1	DJ 346035
8.4	Bolt M6X20	7	DJ 91330
8.5	Crankcase Cover	1	DJ 346010
8.6	Gasket	1	DJ 346009
8.7	Oil Sensor	1	DJ 346018
8.8	Bolt M6X16	2	DJ 91329
8.9	Pin	2	DJ 350902
9	Carburettor Connection Block	1	DJ 346026
10	Ignition Coil Kit Assembly	1	DJ 50340015
10.1	Bolt M6X20	2	DJ 91330
10.2	Ignition Coil	1	DJ 346050
11	Carburettor Kit Assembly	1	DJ 50040138
11.1	Carburettor Gasket	1	DJ 346027
11.2	Carburettor Assembly	1	DJ 346028
11.3	Press Plate	1	DJ 346029
11.4	Stepper Motor	1	DJ 345026
11.5	Intake Pipe	1	DJ 346030
11.6	Nut M5	2	DJ 90015
11.7	Bolts M3X8	2	DJ 92239
12	Intake And Exhaust Valve Kit Assembly	1	DJ 50140031
12.1	Seal, Valve, In	1	DJ 351802
12.2	Valve, Intake	1	DJ 351701
12.3	Valve Exhaust	1	DJ 355901
12.4	Valve Spring	2	DJ 346012
12.5	Rocking Arm	2	DJ 346013
12.6	Retainer, Spring	2	DJ 351801
12.7	Rocking Arm Shaft	1	DJ 346017
12.8	Valve Lifter	2	DJ 346003
12.9	Push Rod	2	DJ 346016
12.10	Pin	2	DJ 350901
12.11	Air Exhaust Stud Bolt	2	DJ 346015
12.12	Stud Bolt	2	DJ 91046
12.13	Intake Gasket	1	DJ 346025
12.14	Cylinder Head Gasket	1	DJ 346043
12.15	Exhaust Gasket	1	DJ 346042
12.16	Cylinder Head	1	DJ 346011
13	Exhaust Muffler Kit Assembly	1	DJ 50240037
13.1	Muffler	1	DJ 346036
13.1.1	Spark Arrester	1	DJ 6967

Item	Description	Qty per Machine	Part Number
13.2	Bolt M6X12	1	DJ 91325
13.3	Nut M6	2	DJ 90016
14	Spark Plug	1	DJ 97124
15	Cylinder Head Cover Kit Assembly	1	DJ 50010064
15.1	Gasket	1	DJ 346037
15.2	Cylinder Head Cover	1	DJ 346038
15.3	Breathing Valve Cover	1	DJ 346040
15.4	Breathing Valve Gasket	1	DJ 346041
15.5	Bolt M5X20	4	DJ 91389
15.6	Screw M4X6	4	DJ 92056
15.7	Tube, Breather	1	DJ 95614
16	Wind-Lead-Cover Kit Assembly	1	DJ 50130025
16.1	Lower Wind-Lead-Cover	1	DJ 346033
16.2	Bolt M6X40	4	DJ 92367
17	Piston & Piston Ring Kit Assembly	1	DJ 50050033
17.1	Clip, Piston	2	DJ 351301
17.2	Piston	1	DJ 346004
17.3	Piston Ring Assembly	1	DJ 346005
17.4	Piston Pin	1	DJ 346006
17.5	Connecting Rod Assembly	1	DJ 346007



Drawing No: 111000560620VN

Date: 2024-10-22

Rev: 01

